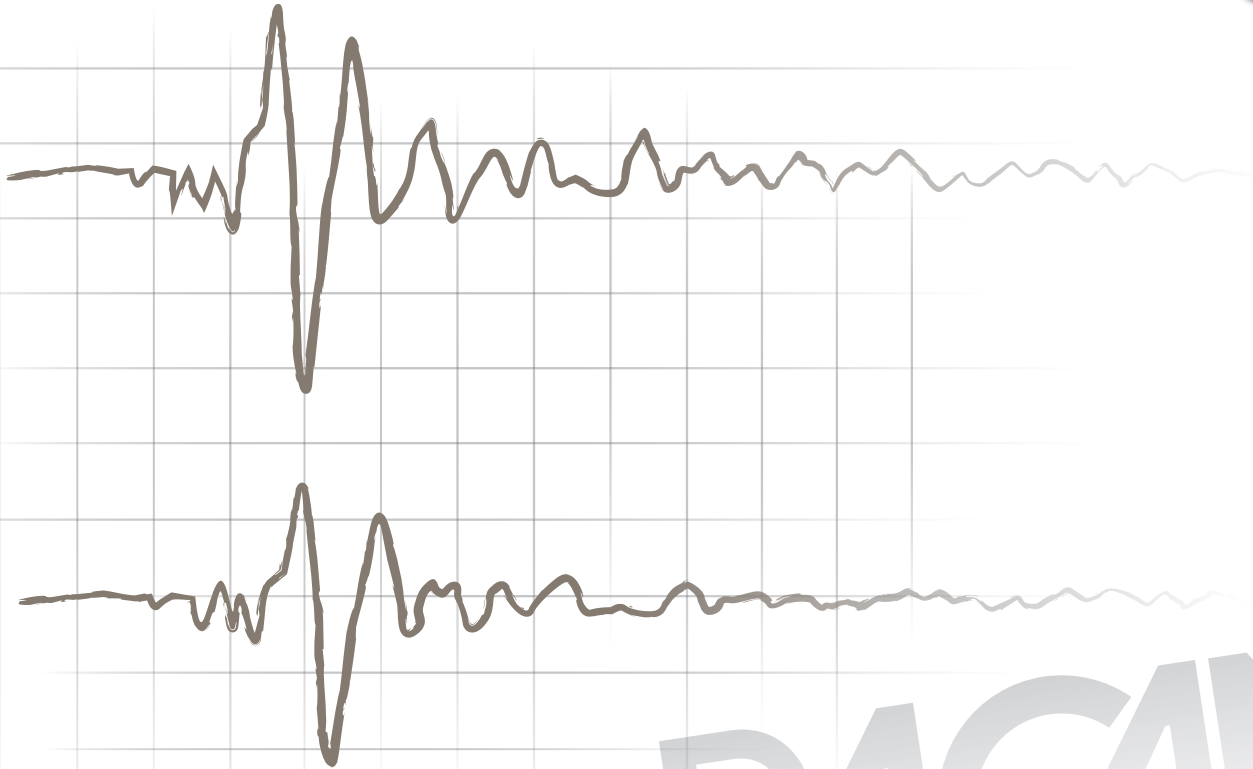
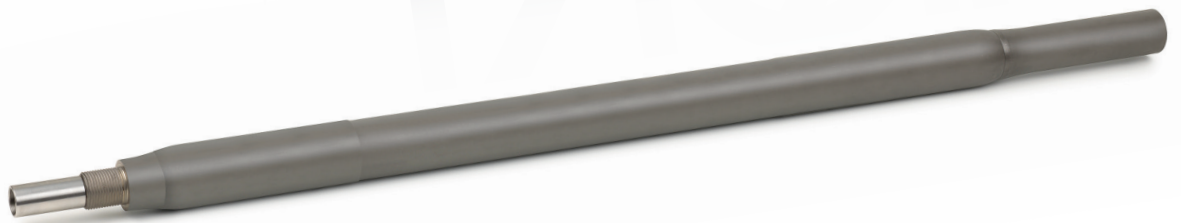


PAGANI®

GEOTECHNICAL EQUIPMENT



PAGANI



SEISMIC MODULE S3X





S-CPT_u STATIC TESTS EVEN MORE PRECISE

The "S3X" PAGANI seismic module for S-CPT_u testing allows to calculate the Vs30 parameter and to determine the **speed profile** for the **seismic response analysis**.

The **special materials** of which it is made of, and the **intense experimentation** that preceding its marketing, place it **AT THE TOP OF WORLDWIDE PRODUCTION.**

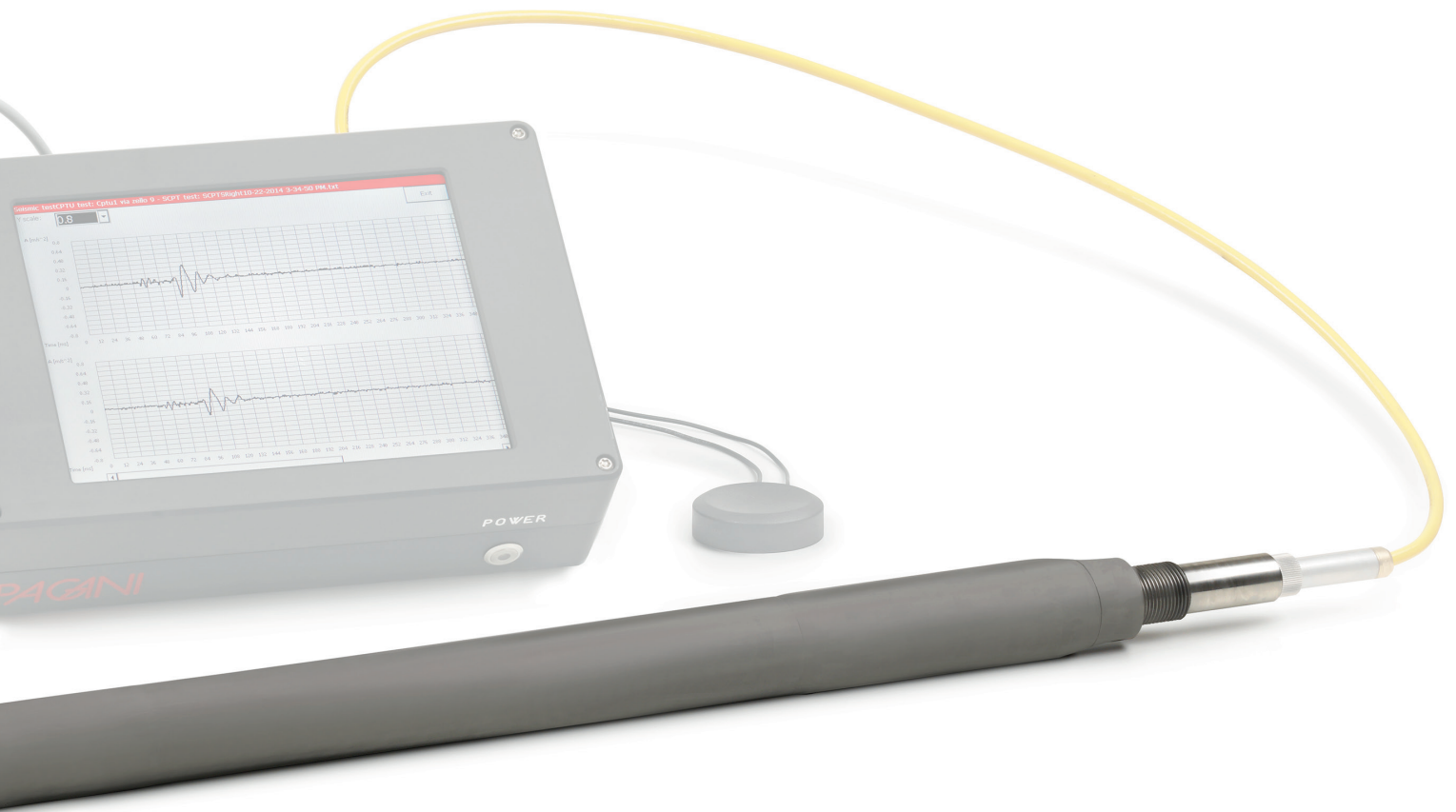
Pagani seismic module comprises two triaxial accelerometers, placed at 50 cm from one another, which **REPRESENT THE STATE OF THE ART IN RESOLUTION, SENSIBILITY AND ACCURACY.**

With each one you can record **a set of three accelerometric components** (two horizontal ones and a vertical one), **allowing to carry out "true interval" calculations of SH and SV waves propagation speed.**

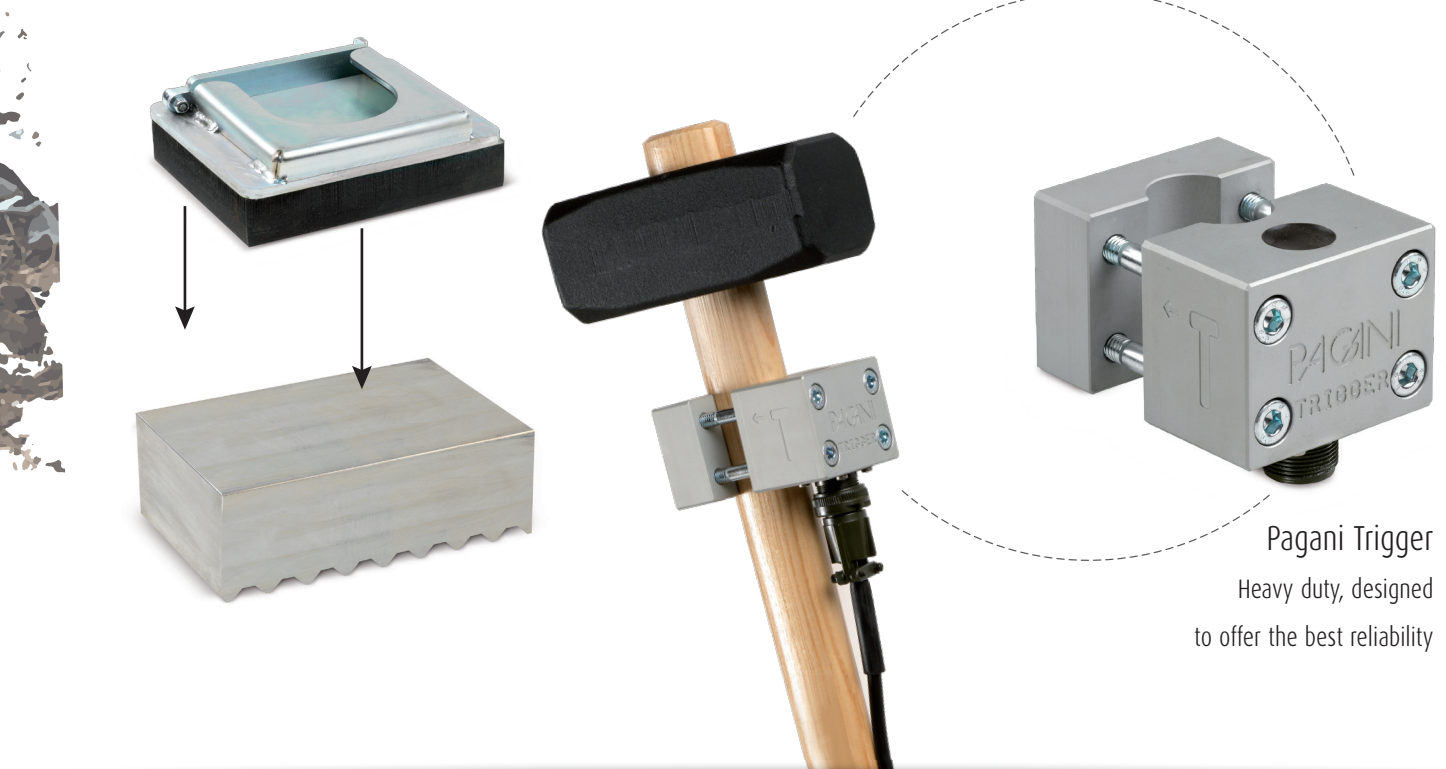




SEISMIC MODULE S3X



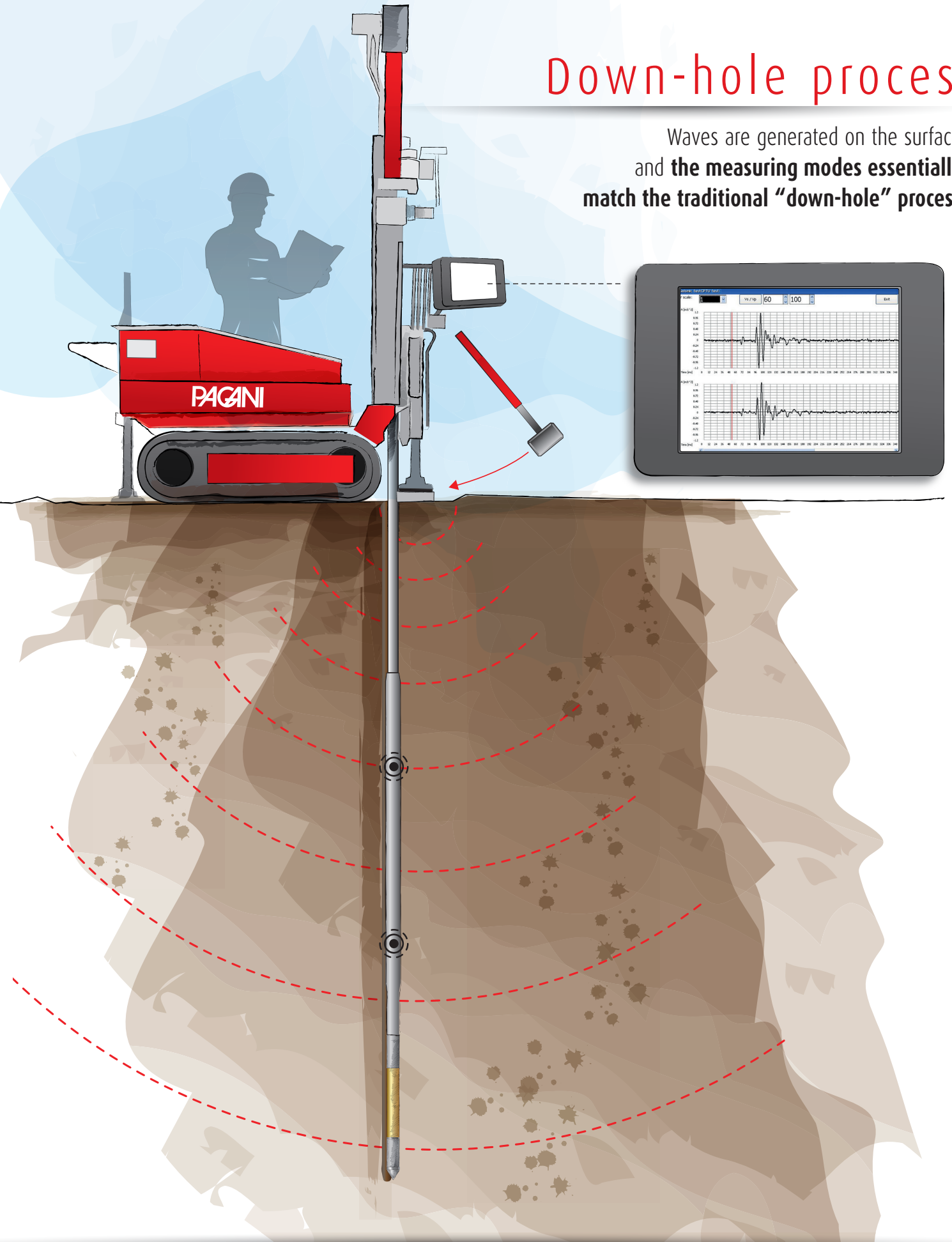
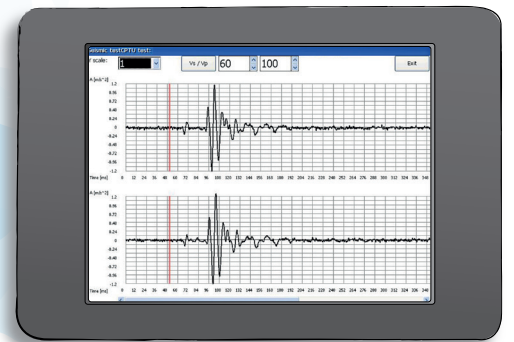
Wave generation system



Pagani Trigger
Heavy duty, designed
to offer the best reliability

Down-hole process

Waves are generated on the surface and **the measuring modes essentially match the traditional "down-hole" process.**

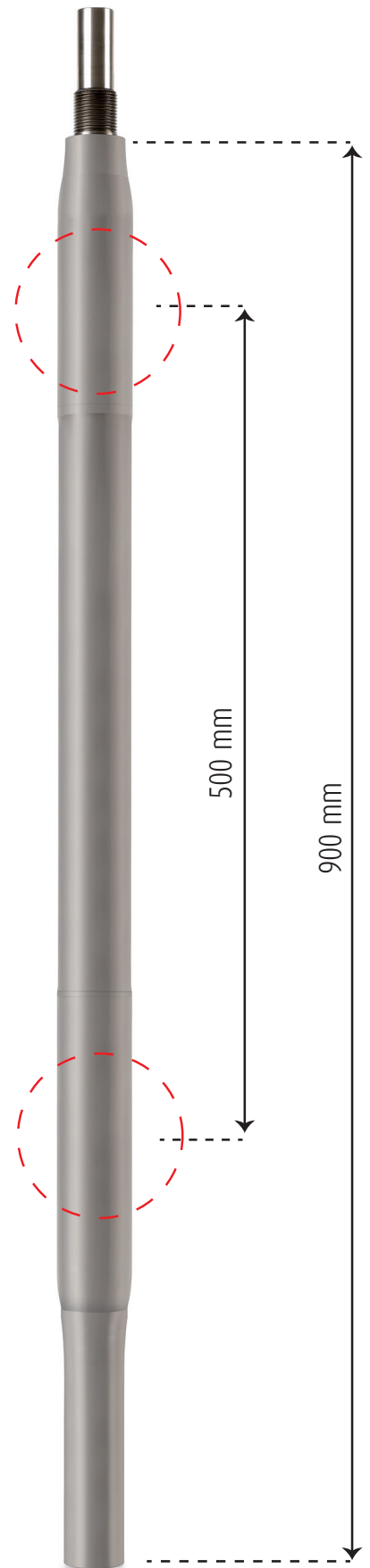


SEISMIC MODULE S3X

SIZE

Length	900 mm
Diameter	47,5 mm
Weight	7,6 kg
Distance between 2 seismic	500 mm

NOTES





www.pagani-geotechnical.com

Pagani Geotechnical Equipment Srl
Loc. Campogrande 26, 29010 Calendasco (Piacenza) Italy
Tel: +39 0523 771535 - Fax: +39 0523 773449
info@pagani-geotechnical.com

Non-binding data,
with right to make changes.
The diagrams may differ from the standard version.
The equipment may differ depending
on which country it is being shipped to.